



VAUGHAN
Primary School

**YEAR 6
SCHOOL RESIDENTIAL AND
HOME BASE
PARENTS MEETING**

MARCH 2022



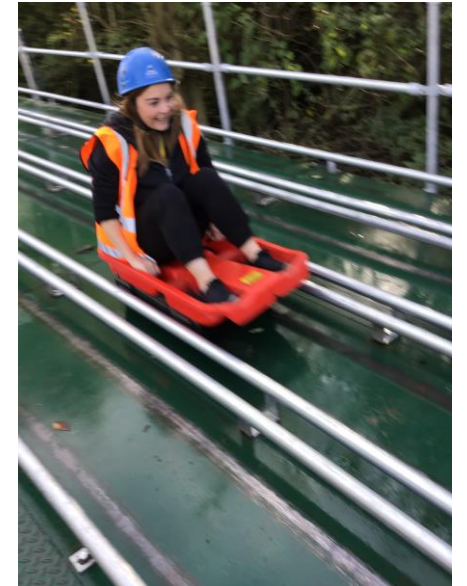
Aims of the meeting

- Share information about the School Residential and the Home Base offer which is planned to take place from Monday 31st October to Friday 4th November 2022
- Information regarding costings and payment plan
- Question and Answer



Home Based Offer

- The proposal for the home-based offer is to provide students a memorable experience and some similar activities as to those offered on the residential trip, but without the overnight stay
- Two day trips to an outdoor activity centre by coach transport
- Excursion and workshops to the Tower of London
- Movie afternoon
- Pizza making event
- Visit to Football Stadium





Home Based Costs

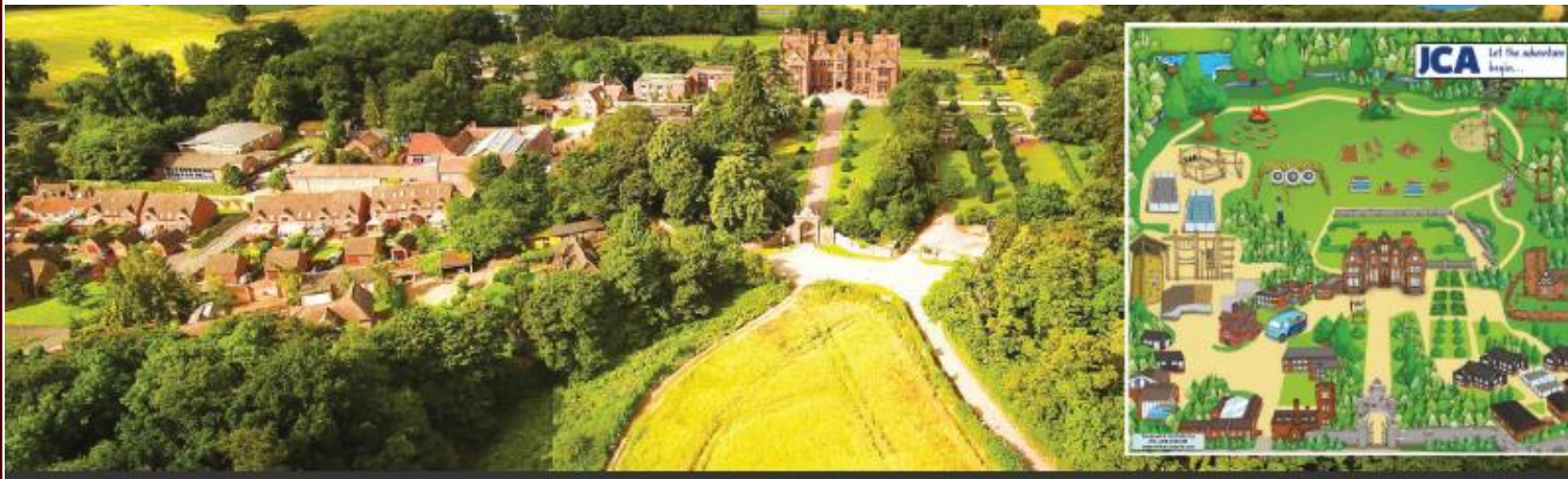
- All activities in the weeks programme
- Full insurance
- 1:8 places for accompanying adults
- One dedicated multi-trained instructor per activity group at the outdoor activity centre
- Achievement certificates
- Travel and coach transportation

14-April-22	12-May-22	9-Jun-22	7-Jul-22	25-Aug-22	Total
£20	£20	£20	£20	£20	£100



JCA Condover Hall

- A primary school trip remains one of the best first experiences children can have of spending time away from their parents and developing confidence, social skills and independence.
- We not only provide the ultimate adventure trip, but an outdoor learning experience that allows every primary school child to grow. Teachers are enabled to help pupils excel in a safe, fun and friendly environment through a series of activities aimed to meet learning outcomes and create memories.
- Flagship activity centre set in the Shropshire countryside offers the ideal combination of outdoor and indoor adventurous activities. Condover Hall is a Grade I Elizabethan Mansion set in 78 acres of fantastic countryside and gardens. Our students will experience history, beautiful surroundings and state-of-the-art activities during their stay.





THE VALUE OF JCA

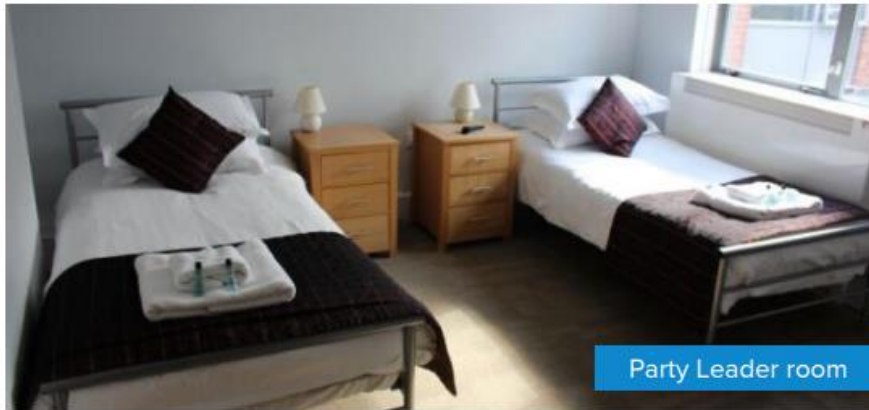


We believe that **learning outside the classroom** is essential to a well-rounded education. Our courses focus on engaging students, providing enjoyable learning, and helping to develop life skills, such as:

- Learning to work together as a team
- Achieving personal and team goals
- Increasing self-esteem and confidence
- Conquering fears
- Trying new and exciting activities
- Experiencing living away from home
- Respecting and valuing each others abilities
- Revealing undiscovered strengths
- Solving problems and taking responsibility



Accommodation at Condover Hall



- There are options of multi-bedded dorms (4 – 12 beds) for students, with most offering en-suite facilities.
- Rooms are a mixture of twins and singles, mostly with en-suite facilities within the same building as the children.
- Senior staff members are on duty until 10:30pm each day with night staff patrolling between the hours of 10:30pm and 07:30am.
- Centre doors are secured in the evening, but can be opened in case of emergency and security barriers guard the entrance to the site.



Facilities at Condover Hall



Tuck shop/Gift shop



Indoor swimming pool



Games room



Cafe



Restaurant



All weather sports pitches



Themed Rooms at Condover Hall



Cinema Room



Dance studio



Grid of stones



Laser maze



Tunnelling room



Games room



SAFETY IS OUR TOP PRIORITY

- All of our centres are health and safety compliant
- Our Safety Management System has been externally inspected and verified
- First-aid kits are taken on all activity sessions
- Centre Activity Managers hold the Emergency First Aid at Work accreditation
- Daily safety and equipment checks are carried out
- Thorough risk assessments have been conducted
- All staff are DBS checked





JCA

Let the adventure begin...



SAMPLE ITINERARY

A week packed with fun!

An example itinerary has been outlined to show how we structure your stay. As a party leader you will be able to choose your activity preferences and an individual programme will be created to suit your needs.

Each of our instructors are trained in all of our land-based activities. You will therefore receive a dedicated instructor per group who will be fully involved in your programme; building fantastic rapport, confidence and team bonding with your students for the duration of your stay. If you are doing water sports or a specialist activity a separate instructor will be provided for this activity.

MONDAY

MORNING

MORNING

AFTERNOON

AFTERNOON

EVENING

Travel to centre

Intro tour

Sensory Trail

Conquest

TUESDAY

MORNING

MORNING

AFTERNOON

AFTERNOON

EVENING

Zip Wire

Orienteering

Aerial Trek

Wet and Wacky

Campfire

WEDNESDAY

MORNING

MORNING

AFTERNOON

AFTERNOON

EVENING

Abseiling

Laser Maze/
Grid of Stones

Gladiator Wall

Body Zorbing

Run Around Quiz

THURSDAY

MORNING

MORNING

AFTERNOON

AFTERNOON

EVENING

Kayaking

Fencing

Team Challenge

Disco

FRIDAY

MORNING

MORNING

AFTERNOON

AFTERNOON

EVENING

Archery

Presentation

Travel back to School



Our activities might include:

- Abseiling
- Archery
- Buggy Building
- Busted
- Campfire
- Climbing
- Fencing
- Aerial Trek
- High Ropes
- Nature Trail
- Orienteering
- Survival
- Tunnelling
- Sensory Trail
- Zip Wire





Residential Costs

- Full-board accommodation with bedding included
- Full activity programme with evening entertainments
- Full holiday insurance
- 1:8 places for accompanying adults
- One dedicated multi-trained instructor per activity group for the duration of your trip, helping students to reach their full potential through trust and support
- Achievement certificates
- Coach transportation

14-April-22	12-May-22	9-Jun-22	7-Jul-22	25-Aug-22	Total
£60	£60	£60	£60	£45	£285

- Your child's place is at risk if you are unable to meet the payment schedule.



Non Negotiables

- Behaviour Expectations:

Students to continue to adhere to the school's behaviour policy

If, prior to the residential, students do not consistently follow the behaviour policy, they will not be able to go.

If, during the residential, students do not follow the behaviour policy, parents will be asked to come and collect their child from Conover Hall.

Any behavioural decisions will be discussed with parents and any final decisions will be made by the Headteacher will be final.

- Any families with accrued debt will need to settle these before they are considered for the residential or home-based offer.

A photograph of a classroom full of children in school uniforms. In the foreground, a boy on the left is looking up and smiling. Next to him, a girl is laughing with her mouth open. In the center, a boy is raising his right hand. To his right, a girl with glasses is looking up. The background is filled with other children, some also raising their hands. The entire image has a reddish-pink tint.

Questions?

THANK YOU FOR ATTENDING THIS MEETING