



VAUGHAN
Primary School

NURSERY PARENTS MEETING

JUNE 2022

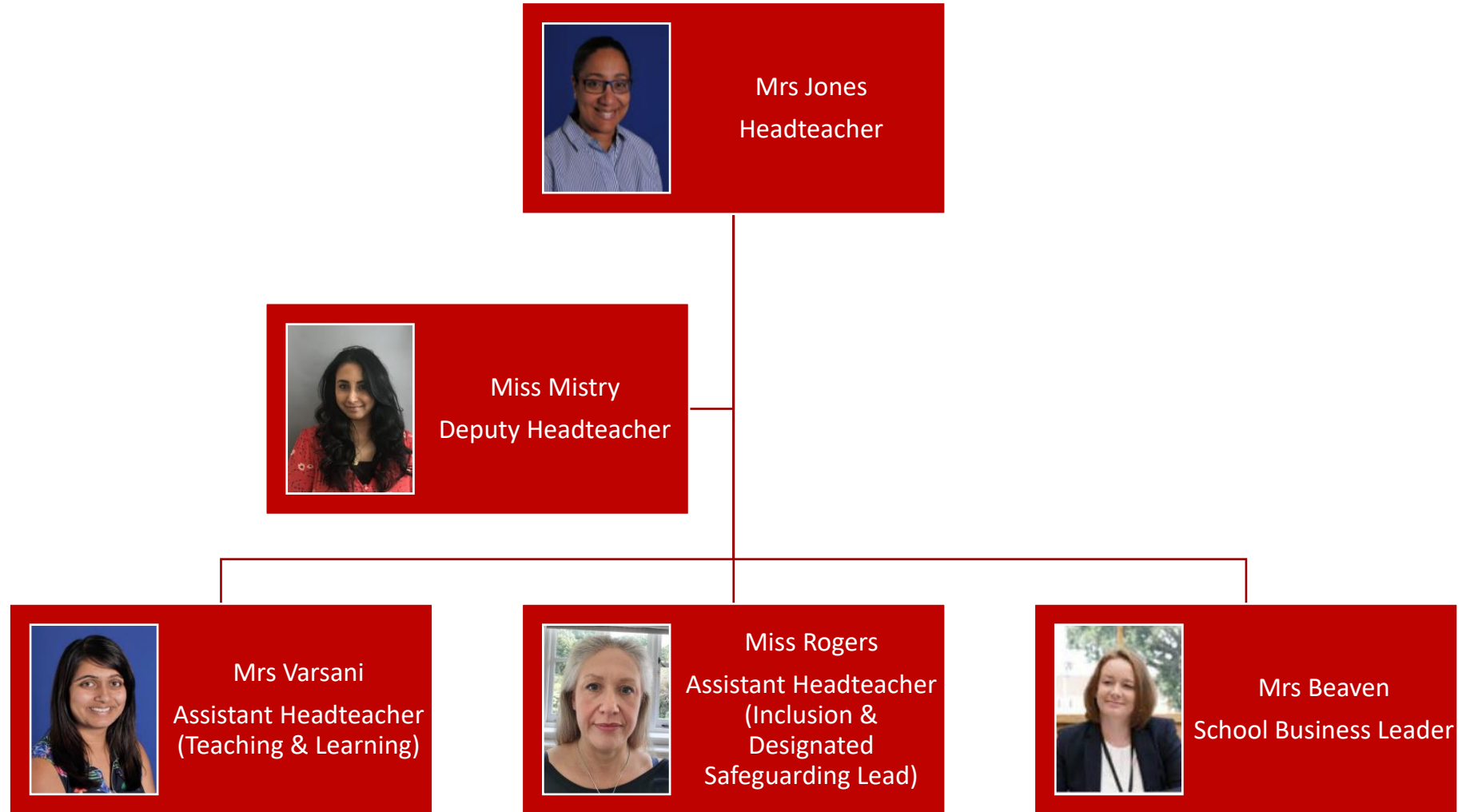


Aims of the Welcome Meeting

1. Welcome to Vaughan
2. Introduction to key staff
3. Pre-admissions paperwork that will follow
4. The First Few Weeks – What you need to know
5. Brief introduction to Early Years Foundation Stage at Nursery

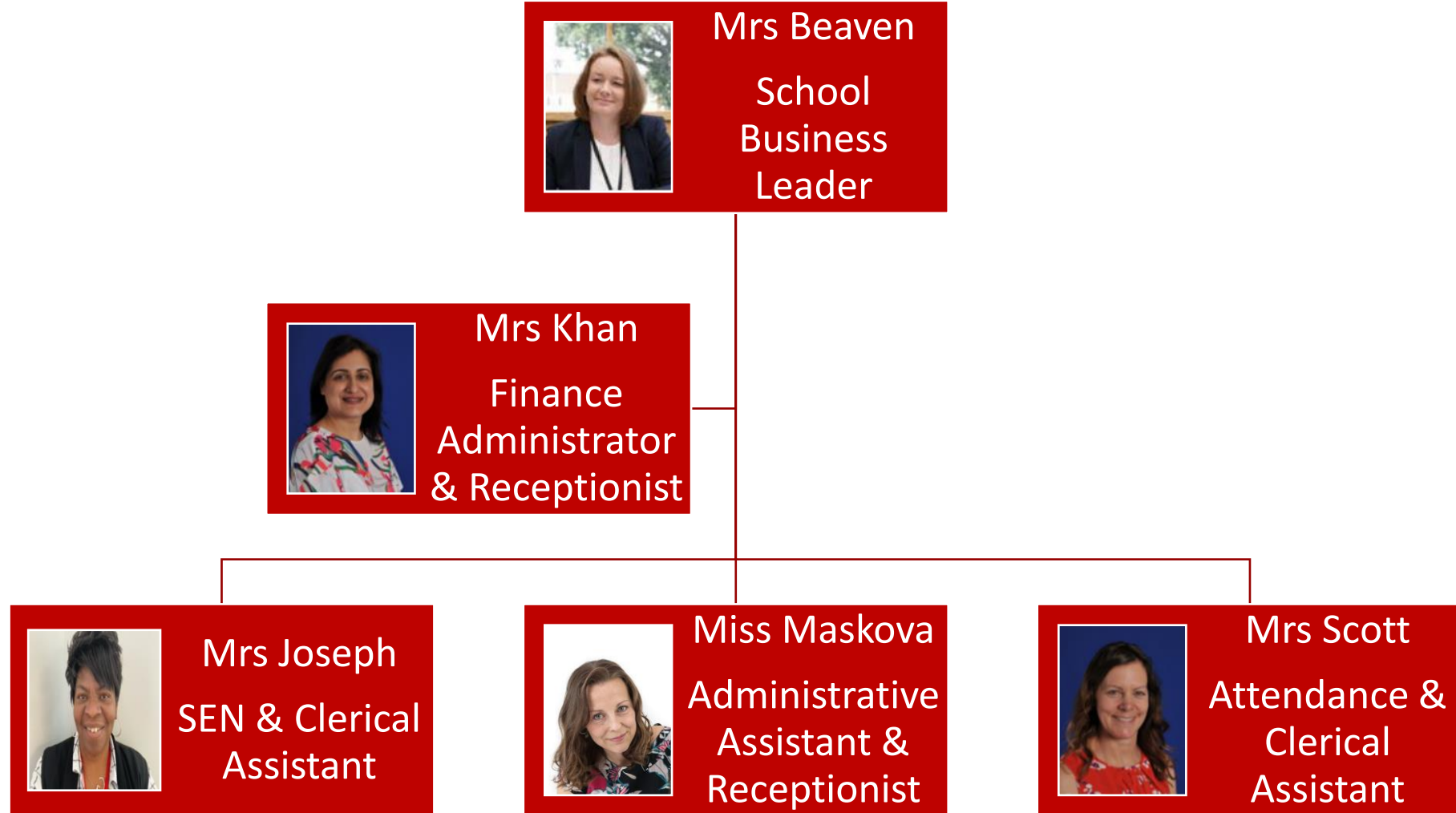


Introduction to the Senior Leadership Team





Introduction to the Administration Team





Nursery Team



Mrs Varsani
Year Group
Leader



Miss Gatfield
Class Teacher
Nursery



Ms Rodiger
Nursery
Nurse



Mrs Norris
Nursery
Nurse



Pre admissions Paperwork

Before the end of the term, you will receive forms that you will need to fill in before your child starts our Nursery.

These will include details about:

- Medical information
- Home-school agreement
- Media permissions
- Key contact details



Our aims for your child

- To be **happy** and to **settle** into school life at Vaughan
- **To progress and learn through play** within the new Early Years Curriculum
- To have their **unique needs met**
- To develop a strong **Parent Partnership**





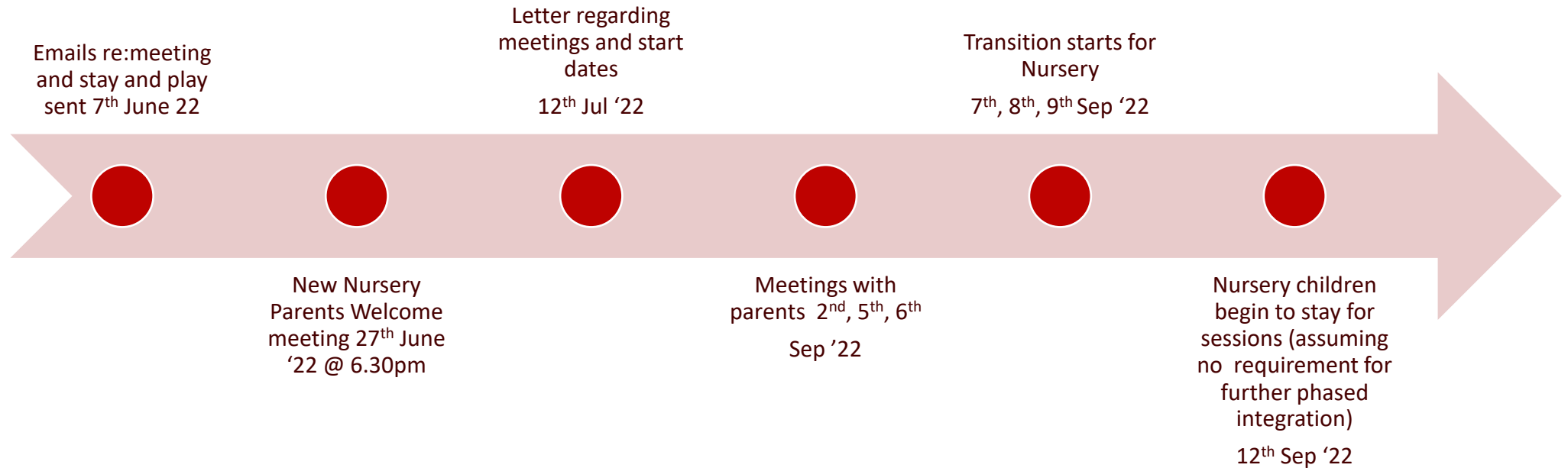
Pre-Nursery Settings & Playgroups

We may contact previous settings to gather information about some children to help with settling and transition to our nursery as well as undertaking visits where appropriate.

The stay and play sessions on Wednesday 6th July will also support your child with transition to our nursery.



Nursery Transition Timeline





Intimate Care

Toilet training

"...it is expected that parents/carers will have trained their child to be clean and dry before they start school."





Welfare Matters

- Medical Needs
- Allergies
- Sickness and Diarrhoea – 48 hours absence must follow
- Temperature – 24 hours absence must follow*
- Administration of medicines requires prior written consent
- Welfare Office is located in the infant building very close by to classrooms



Free & Subsidised Milk

Our school provides a milk scheme that is available to all of our pupils and we would like to invite you to register your child.

Each child that registers with Cool Milk will receive a 189ml portion of semi-skimmed milk every day, delivered fresh and chilled to the classroom.

Their school milk will not only provide them with essential nutrients, but as it is rehydrating and energy boosting it also bridges the gap between breakfast and lunch to help children stay focused.

Is your child entitled to FREE milk?



Register your child for school milk today.

Sign them up in a few clicks...



Go online and quickly register your child for school milk at www.coolmilk.com



Need help? Contact our Customer Service team on 0800 321 3248 or via email at registrations@coolmilk.com



What your child needs every day



Please label all your child's belongings.



The first few weeks

- We will support your child to settle in and feel happy and safe in their new environment.
- We will spend time with all children to learn more about their interests.
- We will use this information to help us plan for their individual needs.





What is the Early Years Foundation Stage?

The (E.Y.F.S.) is the stage of Education for children from **birth** to the **end of the Reception year**.

It is based on the recognition that children learn best through **play** and **active learning**.





What are the 7 areas of Development?

Prime Areas

- Personal, Social and Emotional Development
- Communication and Language
- Physical Development

Specific Areas

- Literacy
- Maths
- Understanding the World
- Expressive Arts and Design





Online Learning Journal

We will be using a secure online Learning Journal to record photos, observations and comments, in line with the Early Years Foundation Stage curriculum, to build up a record of your child's experiences during their time with us.

The provider is 2simple 2Build a Profile and a form for parental consent has been included with your application pack.





Baseline Assessment

- As the children are settling at Nursery staff will be making informal assessments of children's development.
- This will be carried out during the first six weeks of your child starting nursery through play based activities.

A photograph of a large group of children in school uniforms, many with their hands raised in the air, suggesting a school assembly or a celebratory event. The image has a warm, reddish-pink color overlay. The children are of various ages, and their expressions are joyful. The text 'Questions?' is overlaid on the left side of the image.

Questions?

**THANK YOU SO MUCH FOR PARTICIPATING.
WE VALUE YOUR SUPPORT AND PARTNERSHIP AND WE LOOK
FORWARD TO WELCOMING YOURSELVES AND YOUR CHILD TO
VAUGHAN!**