

How to apply

Admissions

Map

Harrow

a guide to
primary schools

2023-2024

Contents



Your application



How places were offered in 2022



How to apply



How the application process works



Late applications



Transferring from Infant to Junior school



Nursery classes



Deferred or outside cohort entry



Primary schools in Harrow



Admissions arrangements



Applying for schools in other boroughs



Children with Special Educational Needs



Appeals



Primary schools map

Your application

Your application must be received by Sunday, 15 January 2023

Home

Map

Admissions

Apply
Now

If your child does not live in Harrow, but you wish to apply for a Harrow school, please contact your child's local authority to make an application.

If your child lives in Harrow, and was born between 1 September 2018 and 31 August 2019, and is due to start primary school in Reception in September 2023, the full timetable for applications is:

1 September 2022	Website opens, and you can apply online at http://www.eadmissions.org.uk
Autumn 2022	Parents applying for a Voluntary Aided/other Faith school must complete and return a supplementary information form direct to the school. These forms are available from the school or www.harrow.gov.uk/schooladmissions
Sunday 15 January 2023	Closing date for applications. Parents applying for a Voluntary Aided school must complete and return a supplementary information form direct to the school.
Monday 17 April 2023	Emails sent to parents with the outcome of their application. Please wait until you have received the email before logging on to the e-Admissions website. In some cases, letters will be sent through the post.
Tuesday 2 May 2023	Deadline for acceptance or decline of offer.
Tuesday 16 May 2023	Closing date for receipt of appeals

If your child lives in Harrow, and is due to start reception in September 2023, but was not born between 1 September 2018 and 31 August 2019, please do not fill out an application form. Instead, email schooladmissions@harrow.gov.uk

How places were offered in 2022

Home

Map

Admissions

Apply
Now

The table on the next page shows how places were allocated to children starting in Reception classes at Harrow's primary schools in September 2022. It shows how many places were available, how many people applied for those places and how those places were then allocated on offer day. The positions at schools in September may be different due to late applications. These are the statistics for last year, and while this year's statistics may be similar, the level and pattern of demand for schools changes every year. This means that the distances cited in the table on the next page change from year to year. Please do not assume

that because children in your area attend a particular school that your child will also be offered a place.

Harrow schools do not have catchment areas as part of their admission arrangements*. Schools in Harrow use distance as part of their admission arrangements. All schools in Harrow measure distances from home to school in a straight line from the home address to the school.

Information on how places were allocated at faith voluntary aided schools, free schools and academies, can be obtained directly from the school.

***Catchment area for the purposes of admissions is a defined geographical area set out in the admission arrangements.**



[Home](#)
[Map](#)
[Admissions](#)
[Apply Now](#)

School name	Places available	Number of applications received	SEN	Looked-after children	Medical/Social needs child	Medical parent	Sibling	Hindu children*	Staff child	Distance criterion	Furthest distance in miles where criterion applied as tie-breaker	Offered as the nearest school with a vacancy	Total offered
Avanti House	60	261	0	0	N/A	N/A	27	8	0	25	1.805	N/A	60
Aylward Primary	90	177	1	0	0	0	28	N/A	0	61	3.277	N/A	90
Belmont	90	255	0	0	0	0	42	N/A	0	48	0.608	N/A	90
Camrose	60	116	1	0	0	0	19	N/A	0	23	N/A	4	47
Cannon Lane	120	348	0	0	0	0	47	N/A	0	73	1.402	N/A	120
Cedars Manor	60	122	0	0	0	0	20	N/A	0	31	N/A	6	57
Earlsmead	60	92	0	0	0	0	5	N/A	0	14	N/A	2	21
Elmgrove	120	254	4**	1	0	0	56	N/A	0	57	N/A	2	120
Glebe	90	208	0	0	1	0	27	N/A	0	53	N/A	9	90
Grange Primary	60	109	0	1	0	0	24	N/A	0	21	N/A	14	60
Grimsdyke	90	326	0	0	0	0	36	N/A	0	54	0.909	N/A	90
Heathland	90	253	0	0	0	0	39	N/A	0	51	0.552	N/A	90
Kenmore Park Infant	90	155	0	0	0	0	38	N/A	0	25	N/A	0	63
Longfield	90	235	0	0	0	0	34	N/A	0	40	N/A	16	90
Marlborough	90	436	0	1	0	0	43	N/A	1	45	0.372	N/A	90
Newton Farm	60	356	0	0	0	0	25	N/A	0	35	0.271***	N/A	60
Norbury	90	250	0	0	0	1	29	N/A	1	59	0.443	N/A	90
Pinner Park	120	420	0	0	0	0	48	N/A	2	70	0.862	N/A	120
Pinner Wood	90	347	0	1	0	0	50	N/A	0	39	0.495	N/A	90
Priestmead	120	330	1	0	0	0	54	N/A	0	65	0.552	N/A	120
Roxbourne	60	175	0	0	0	0	20	N/A	0	40	1.323	N/A	60
Roxeth	60	194	0	0	0	0	29	N/A	0	31	0.452	N/A	60
Stag Lane	120	194	0	0	0	0	48	N/A	1	54	N/A	3	106
Stanburn	90	307	1	1	0	0	39	N/A	0	42	N/A	0	83
The Welldon Park	60	94	0	0	0	0	19	N/A	0	29	N/A	12	60
Vaughan	90	421	0	0	0	1	38	N/A	1	50	0.365	N/A	90
Weald Rise	60	104	0	0	0	0	18	N/A	0	22	N/A	12	52
West Lodge	90	466	0	0	0	0	39	N/A	0	51	0.436	N/A	90
Whitchurch	120	318	3	0	0	0	48	N/A	0	69	1.811	N/A	120
Whitefriars	90	228	0	1	0	0	34	N/A	1	54	1.304	N/A	90
Hujjat	60	136	0	Please contact the schools directly for the breakdown of how places were allocated at these schools								N/A	60
Krishna Avanti	60	284	0									N/A	60
St Anselm's	60	229	1									N/A	60
St Bernadette's	60	160	0									N/A	60
St George's	60	159	0									N/A	60
St Jerome CofE	60	140	0									N/A	60
St John's	60	101	0									2	56
St John Fisher	90	222	0									N/A	90
St Joseph's	60	159	0									N/A	60
St Teresa's	60	142	0									N/A	60

* Hindu children with a practising Hindu parent who worships at the ISKCON Bhaktivedanta Manor temple

** Child or children that currently attend school who will be remaining in Reception

*** Due to tied distance, random allocation was used for the final place

How to apply

Apply using our online form



Home

Map

Admissions

Apply Now

We ask everyone to apply using the online form with the following exceptions:

1. If your child has an Educational, Health and Care Plan, please do not complete an application form.
2. If your child wishes to begin primary school (reception) in September 2023 but was not born

between 1 September 2018 and 31 August 2019, please do not complete an application form.

Please email schooladmissions@harrow.gov.uk to apply.

3. You cannot apply for private or independent schools through this process.

Frequently Asked Questions

Do I need to register?

Yes, you will first need to register your details with the website and will be sent a user name and password.

What is the deadline?

Your application must be complete and submitted by 15 January 2023. You can make changes to your application right up to the closing date.

What happens if I do not submit my application in time?

At the end of the process, you will be invited to “submit” the form. Failure to “submit” will mean your application has not been sent to us, and your application will not be considered. You will then have to enter the **late application process**.

Do I have to complete the form all at once?

No – if you wish, you can complete part of the form, save your position and return later to review, complete or change it. Every time you change your application you will receive a confirmation email.

Can I apply to schools in other boroughs?

Yes – if you are a Harrow resident you can use the same online form to

Are there any tools online to help me choose schools?

To find out which are your local Harrow schools, you can go to www.harrow.gov.uk/distancetool



Home

Map

Admissions

Apply
Now

apply to schools in Harrow and also to schools maintained by other local authorities. You can apply for six schools; however, you may only apply to a maximum of four schools in Hertfordshire. Otherwise there is no restriction to the mix of schools on your application. See **Applying for Schools in Other Boroughs** section.

Can I apply for a Harrow school if I live outside the borough?

If you live outside Harrow and want to apply to a Harrow school you can list the school on the application you submit to your local authority.

I don't have the internet at home. Where can I apply?

Computers with internet access are available to use free of charge at any Harrow library.

I don't like using computers. Can I get a paper form instead?

No – paper forms will only be issued under exceptional circumstances, due to the extra administrative cost and complexity of processing them.

I need help! Can you help?

Yes – if you need help with your application please email **schooladmissions@harrow.gov.uk**

I don't want my child to start school. Can we defer entry?

Sometimes schools agree to defer entry for children. Even if you wish to delay your child's entry to school you must still apply for a place for your child in the normal way.

More information can be found on deferred or outside cohort entry here



What to do if your details change

You must tell us straight away if any of your details change after you have submitted your application.

If you move house and change your address; if your child changes primary school; or if any other factual details regarding your application change, please email us immediately at **schooladmissions@harrow.gov.uk**.

Failure to let us know about changes could invalidate your application or even lead to an offer

being withdrawn.

Deciding which address to put on your application

The only acceptable address to put on your application is your child's permanent address and they must be living there at the closing date for receipt of application.

Please do not list an address of someone who provides a temporary care arrangement for your child, a business address, childminder's

Home

Map

Admissions

Apply
Now

address, a relative's address or any other address other than the child's permanent home address.

Where families have recently moved

All applications that are received will be verified.

into an address prior to completing an application, we may require further information to ensure that the property has not been obtained solely for the purposes of obtaining a school place. If a family move into a property temporarily to increase the chances of gaining a school place, the council will use the permanent residence for the purpose of the application.

For example, if the family own a property but are living at and apply from a different address, the council will assume that the second address is temporary and that the property that you own is where the child ordinarily lives.

Where the owned property is being renovated, this will still be considered the family's permanent address. Evidence will otherwise be required that the property is disposed of. If a family own more than one property, the council will request further evidence to demonstrate where the family normally live to determine the address the council will use for the child's application.

If a school place is offered on the basis of an incorrect address, the place will be withdrawn. Providing false information or fraudulent documentation could lead also to legal action being brought against you, including a criminal prosecution. Harrow Council reserves the right at any time to investigate and verify

any address, information and/or documentation in order to ensure that it is allocating places appropriately and fairly. These investigations may extend to Council databases, home visits and background checks. We may also ask you for further proofs.

If we offer a place at a school and then discover that the offer was made on



fraudulent or misleading information (for example, a false claim to living at an address) we will withdraw the place offered. This has happened in previous years. This will cause considerable distress, particularly for the child involved.

In some cases, a child may live permanently with parents with officially

Where a place has been offered based on false information, we can withdraw the offer even after your child has started at school.

Home

Map

Admissions

Apply
Now

shared responsibility at more than one home address. Please note, this only applies to parents, not other carers or relatives. In these cases, the only acceptable address is the residence where the child spends the majority of the school week (Monday-Friday).

On the rare occasions when a child's residence during the school week is split equally between parents, then parents will be asked to determine which residential address should be used for the purpose of admission to school. In all such cases, we require a

joint declaration from the parents with officially shared responsibility stating the pattern of residence.

If no joint declaration is received by the closing date for applications, the home address will be taken as the address of the parent who receives child benefit.

In cases where parents are not eligible for child benefit the address will be that of the parent where the child is registered with the doctor.



Hints and tips on choosing a school

Home

Map

Admissions

Apply
Now

- Think what kind of school your child is best suited to: You may want to think about if you want a faith-based school or a school with a breakfast club / afterschool clubs, travel to and from school.
- Familiarise yourself with the admissions criteria for schools.
- Visit the school you are interested in applying to. Attend any open days / evenings held at the school. Look at the information on how places were allocated in previous year.
- Look at the school Ofsted report / school website – schools do change over time so it is important to get your information from a variety of sources and remember that not everything you hear about a school may still be true.
- During your research, you will need to read the admissions criteria for the school(s) you want to apply to.
- Think what kind of school your child is best suited to: You may want to think about if you want a faith-based school or a school with a breakfast club / afterschool clubs, travel to and from school.
- Distance from home to school is often used as tie breaker. Distance is usually measured in a straight line from your house to the centre point of the school (but it can be different in some cases)
- Some schools will have medical and social criteria but only if you meet certain conditions
- Some schools will give priority to staff who work for the school for a certain number of years or in hard to recruit subjects
- Some schools outside of Harrow may have additional criteria that give priority based on catchment areas.
- Make sure you submit your application on time – if you miss the deadline your application won't be considered until after the National Offer Day.

To give you some samples of what to check for:

- Church / Faith schools will give priority to applicants that can demonstrate practice of their faith.
- Not all schools give priority to

How the application process works

Home

Map

Admissions

Apply Now

On your application form you will be asked to list six schools, ranked in order of preference. You must name the schools that you wish to apply for, in the order you prefer them. You do not need to use all six preferences, however, we strongly advise that you do use all six preferences. There is no advantage in naming only one school. Once the closing date has passed on 15 January 2023, the admissions process will begin.

How the preference system works

All the applications we receive will be considered individually against the criteria published in this guide. Each school will then allocate its places to the children with highest priority under its own admissions criteria.

Each school you name on your application is considered separately. That means that if you have entered six preferences, your child could be allocated as many as six places. Children will only be offered one school place.

When children are allocated a place at more than one school, the system refers to the order of preference that you have listed on your application form.

It will then keep the offer at the school you have ranked highest, and take your child's name off the list for their lower-ranked preferences. These places will then be allocated to the children with next-highest priority under those schools' admissions criteria.

Children will only be offered one school place. When children are not allocated a place at any of their schools

of preference, they will be offered a place at the school nearest their home that still has vacancies once the above admissions process is complete.

Councils will not pass on details of where the school was ranked on your application to schools. No school will be told about other schools listed on your application.

Extremely important advice about the preference system

Harrow has many oversubscribed schools. Every year there are children in Harrow who are not allocated a place at any of their schools of preference. These children will receive an offer for a place, but it will be at a school which they did not choose. These places may be at a considerable distance from their home.

If you wish to have the best chance of avoiding this, and avoiding other common mistakes in the applications process, please consider the following advice when making your application:

- Use all six preferences available to you.
- Use one or more of your preferences on the school or schools nearest your home. The most common admissions tie-breaker for an

Home

Map

Admissions

Apply
Now

oversubscribed school is distance from home to school.

- To find out which are your local Harrow schools, you can go to www.harrow.gov.uk/distancetool
- Remember to list the school you like the most as first preference, the school you like the second-most as second preference and so on, regardless of its popularity or historical oversubscription.
- Remember to fill out and submit a **Supplementary Information Form (SIF)**. The Harrow school list indicates which schools have a SIF.

Reasons for preference

When you complete the application, there is a space for each preference where you can note why you have selected a school. This information will be passed to the school. The box is optional and will only have an effect on your application if it relates directly to the school's admissions criteria.

Waiting Lists

After the admissions process is complete, we strongly advise that you accept the place your child has been offered.

If you have not been allocated a place at your first preference school, your child's name will be placed on a waiting list for all the schools which you ranked as a higher preference than the school where you received an offer. Your child will remain on these waiting lists even after you accept your offered place.

Waiting lists are not a 'first come, first served' list and so time on the list does NOT give any priority. Waiting lists remain in the priority order as determined during the admissions process. This means that

your child may move down the waiting list if another child, with a higher priority under the admission arrangements, is added (for instance, through a late application).

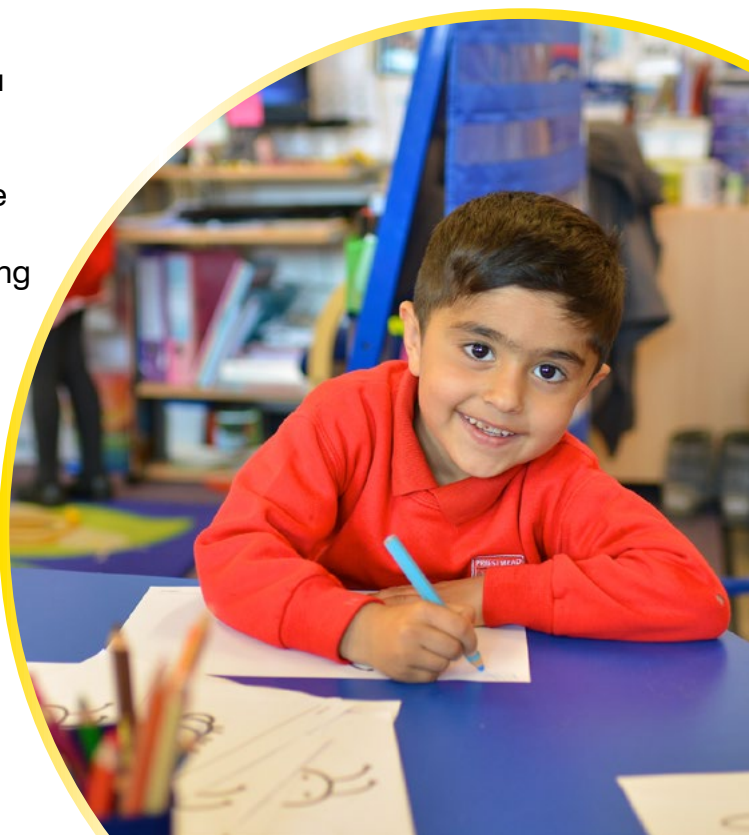
Places are offered from the waiting list throughout the year. If a place is offered from the waiting list, this new offer will supersede any previous offer, which will then be withdrawn.

Waiting lists can be viewed online via MyHarrow. Children's names will remain on the waiting lists for Harrow schools until the end of the 23/24 academic year.

Why do some children get places at schools they haven't applied for?

If, at the end of the application process, your child cannot be offered a place at any of the schools on their application, your child will be allocated a place at the closest school to their home which still has a vacancy.

In nearly every case where this type of



allocation occurs, parents are happy with the alternative offered. It is always a good idea to contact the school where you have been offered a place. This gives you a chance to see the school, rather than rely on what you might have heard about it, and you are also able to discuss any worries that you might have with the school staff. However, if you are still unhappy about

the school offered you may decide to use the appeals process.

Accepting a place

Every parent who has applied online for a Reception place for their child will receive an email on 17 April 2023 to offer their child a place. You will need to log back into the **e-admissions website** and accept the offered place.

Home

Map

Admissions

Apply
Now



Late applications

Home

Map

Admissions

Apply Now

If you do not submit your application to Harrow Council by 15 January 2023 then your child will not take part in the normal admissions process. Instead, they will need to go through a late application process.

You will still need to complete an application form online as normal. However, your preferences will not be assessed or considered until the normal admissions process is complete and offers are made on 17 April 2023. Late applications will then be allocated places out of the pool of places that are remaining.

There are a small number of exceptions to this rule. The following are examples of exceptions that will allow late applications to be considered for the normal admissions process:

1. If your family moved house after the closing date, but before **9 February 2023**.

You will be asked to provide a letter from your solicitor confirming the completion date and you will need to submit proof confirming you have taken up residency. If you are renting, you will be asked for a formal tenancy agreement from a letting agent or estate agent.

2. If your family returned home from abroad after the closing date, but before **9 February 2023**.

You will be asked to provide a council tax bill confirming re-occupation of your property and cease of any tenancy on the property; you will also be asked for confirmation for your move from your employer.

3. If a single parent has been ill for some time, or there has been a recent death of an immediate family member. You will be asked to provide evidence of the above.

Late changes to your application

You must tell us straight away if any of your details change after you have submitted your application.

If you move house and change your address; if your child changes pre-school; or if any other factual details regarding your application change, please email us immediately at **schooladmissions@harrow.gov.uk**. Failure to let us know about changes could invalidate your application or even lead to an offer being withdrawn.

Please note, If you move after 9 February 2023 your application will be considered from the address that you were living at prior to moving. We will only be able to update the address after the 17 April 2023.

Transferring from Infant to Junior school

Home

Map

Admissions

Apply
Now

Most schools in Harrow are now Primary schools, which teach children from Reception straight through to Year 6. However, Kenmore Park Infant School and Kenmore Park Junior School is arranged in pairs: Infant schools, which teach children up to Year 2; and Junior schools which teach children from Year 3 to Year 6.

Parents of children attending an Infant school must apply to join a Junior school when their child is in Year 2. Your Infant school will remind you of the need to apply.

How to apply for Junior school

Parents of children who live in Harrow and are starting Year 2 at their Infant school in September 2021 must apply to join a Junior school, to start Year 3 in September 2023.

The closing date for applications is 15 January 2023.

You should apply using our online form, which can be found at www.eadmissions.org.uk

See **How to Apply** section for the timetable for applications, which is the same as the timetable for application to Reception.

Children attending an Infant school have a high priority in the admissions arrangements for the linked Junior school and are extremely likely to be accepted.

The form allows space for six preferences. You can only apply for your child to join a Junior school. You cannot apply for your child to join a Primary school.

If you wish, you can apply for your child to join a Junior school other than the Junior school linked to your child's Infant school.

Most Junior schools are likely to be full or have very few places available, after children from the linked Infant school have been offered places.

If your child meets the criteria for more than one of the schools for which you have applied, we will offer a place at your highest-ranked school.

Nursery classes

The school list indicates which schools have nursery classes attached to them for children born between 1 September 2019 and 31 August 2020.

Nursery classes provide the ideal bridge from home to school. All Harrow's nursery classes have a qualified teacher and trained assistant working together with others, often including parents. Parents are welcome to come in and spend time with their child to help them settle in and make the transition from home.

The Early Years Foundation Stage accounts for children developing and learning in different ways and at different speeds.

Home

Map

Admissions

Apply Now

How to apply for a nursery place

To apply for a nursery class place in any Harrow school*, please visit <https://www.harrow.gov.uk/schoolnursery>. The school will inform you directly if you have been offered a place in the nursery and when your child will start.

Moving from nursery class to Reception class at school

You must apply separately for a place in a Reception class in a primary school, irrespective of whether your child attends nursery class.

Attendance at a nursery class does not give any priority for a place in the school's Reception class.

There is no guarantee that if your child attends the nursery you will be offered a place in the school's Reception class. You will need to plan and prepare your child for changing school.

Admissions criteria

If more applications are received than there are places in a nursery, places will be offered to children in the following order:

1. Looked After children or previously

Looked After children by a local authority.

2. Children referred by Harrow's Special Educational Needs Assessment and Review Service.
3. Sibling link (i.e. older brothers/sisters). Children with a brother or sister attending the primary, infant school or linked junior school at the time of admission.
4. Any other children.

If, under any criterion, there are more children than there are places remaining in the nursery, then the available places will be offered to child(ren) who live closest.

Distance will be measured in a straight line from home to the centre point of the school site. To find out which are your local Harrow schools, you can use the **distance tool**.

Home to school distance will be measured by Harrow's School Admissions Service.

You may only complete one application form for each child. If, at a later date, you wish to change your nursery preference, please cancel the original application before applying to any other nursery. If more than one application is submitted, and this results in more than one place being offered, the form with the latest date will be taken as the valid application. Any earlier application which

Home

Map

Admissions

Apply
Now

resulted in an offer being made will be withdrawn.

If you change address but do not want to change your nursery preference, please take proof of your new address to the school office to change the details on your application form. This will ensure correspondence is sent to the correct address.

Please note that if you submit more than one form this may make your applications invalid.

*In addition, Hillview Nursery Centre is a maintained nursery school at 2 Grange Road, South Harrow HA2 0LW. Telephone 020 8422 4692.

- It is important to understand that getting a place in a nursery class does NOT mean your child will be given a place in a Reception class in that school
- You must make a separate application for Reception class
- You may need to plan for, and prepare your child for changing school

Admissions criteria for the Heathland Whitefriars Academy Nurseries are listed in their **Admissions Arrangements** pages.



Deferred or outside cohort entry

Home

Map

Admissions

Apply Now

Admission outside normal year groups (“outside cohort”)

Parents may apply for their children to be admitted outside of their normal year group, or “cohort”, either in a lower or higher year group. This may be appropriate, for example, if the child is gifted and talented or has experienced problems such as ill health.

To apply for a child to be admitted out of cohort, parents should email schooladmissions@harrow.gov.uk. Requests to defer entry will only be accepted in exceptional cases. Offers of places in a child’s correct chronological year group cannot be held until the following academic year. If deferred entry is agreed, parents will need to apply again in the following year to gain a place for their child.

Summer-Born Children

Summer-born children (those born between 1st April and 31st August 2019) can legally be withheld from school until September 2024, which is the September following their fifth birthday. At this point, they will have missed a year of school, and will join a year group that is moving from Reception to Year 1. Withholding summer-born children in this way is not generally recommended educationally.

If parents wish for their summer-born child to join the Reception class – instead of Year 1 – in September 2024, they must make a Deferred Entry request as above. This does not apply to children born in the Autumn and Spring as these children must legally be in school full-time in the term that starts after they turn five years old.

Harrow’s Process

1. Enquiry received for admission of children outside their normal age group or summer-born application to be placed out of cohort. Parents are advised to complete an application for the correct cohort while the request is considered.
2. Parents must complete a Deferral Entry Request Application Form for each school listed as a preference. The form will require evidence to support the request by 15 January 2023.
3. The Deferred Request Application will be sent by the Admissions Service to all schools named as preferences and the Early Years SENCO asking for evidence to support the request.
4. For Harrow Community Schools the application and supporting evidence will be collated by the Admissions Service and presented to the Delayed Admission Panel which will decide whether to agree to the request or not.
5. If the parents are requesting a place at schools which are outside Harrow Borough, Voluntary Aided, Academy or Free Schools, the Admissions Service will send the information to the relevant Admissions Authority for their decision.
6. A letter will be sent by School Admissions with the outcome of the decision for Harrow Community schools, including responses for any other non-Harrow Community School preferences.
7. For summer-born children applications, if the local authority supports the request that entry to school is deferred, the parent will need to reapply for a place for the following year and the application will be

processed in accordance with the co-ordination process.

If the pupil is not offered a place at a preferred school, the head teacher of the school at any alternative offer made will be advised and be given the opportunity to consider the request if the offer of place is not for a Harrow Community School.

In-Year Admissions

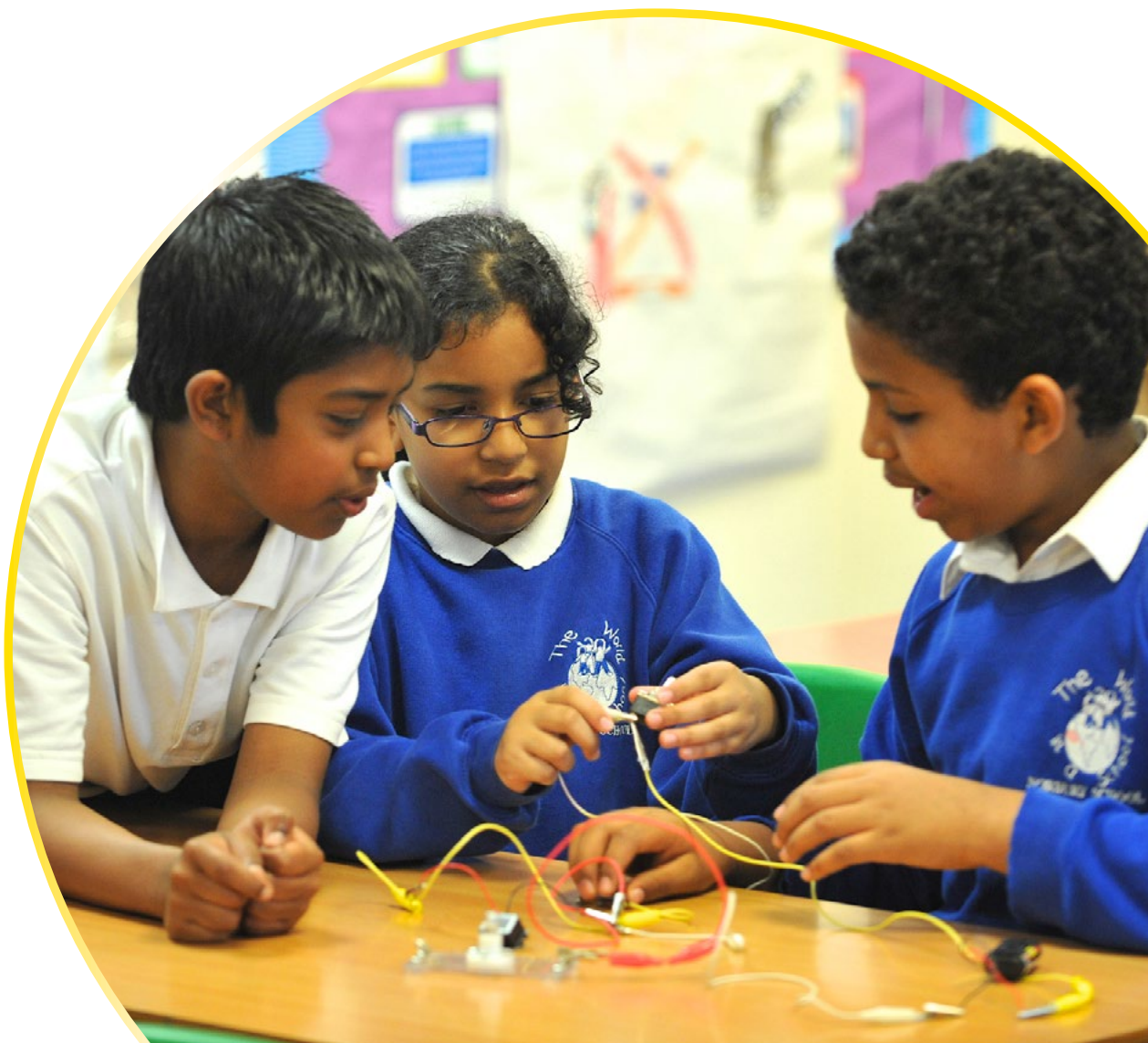
If you wish to apply for a place at a Harrow school during the school year, either because you have just moved into the area, or your child wishes to transfer from one school to another, visit our [school admissions website](#) at for further information and an In-Year Application Form.

Home

Map

Admissions

Apply
Now



Primary schools in Harrow

Home

Map

Admissions

Apply
Now

1

Avanti House Primary School

Common Road, Stanmore,
Middlesex, HA7 3JB
020 8249 6831
Headteacher: Mrs Lalita Joshi
Places Available: 60
avanti.org.uk/avantihouse-primary/admissions
DfE No. 310 2006

A 4-11    

2

Aylward Primary School

Pangbourne Drive, Stanmore, HA7 4RE
020 8958 9202
Headteacher: Mr Clive Westall
Places Available: 90
www.aylwardschool.org.uk
DfE No. 310 2001

A 4-11 N   

3

Belmont School

Hibbert Road, Harrow Weald, HA3 7JT
020 8427 0903
Headteacher: Mrs Poonam Aggarwall
Places Available: 90
www.belmont.harrow.sch.uk
DfE No. 310 2055

C 4-11 N   

5

Cannon Lane Primary School

Cannonbury Avenue, Pinner, HA5 1TS
020 8866 3536
Headteacher: Mr Alastair Phillips
Places Available: 120
www.cannonlanepimary.org
DfE No. 310 2073



C 4-11   



Key to symbols

Type of school

- C** Community
- VA** Voluntary Aided
- A** Academy
- F** Free school

Supplementary Information Form

Age Range 4-11
Nursery class N
Breakfast club 
After-school club 

Map reference 
Travel map link 

4

Camrose Primary School and Nursery

St David's Drive, Edgware, HA8 6JH
020 8952 3272
Headteacher: Mrs Sharon Crick
Places Available: 60
www.camrose.harrow.sch.uk
DfE No. 310 2053

C 4-11 N   

6

Cedars Manor School

Whittlesea Road, Harrow, HA3 6LS
020 8428 5845
Headteacher: Mrs Kathy-Ann McClean
Places Available: 60
www.cedarsmanorschool.co.uk
DfE No. 310 3514

C 4-11 N   

Home

Map

Admissions

Apply
Now

7

Earlsmead Primary School

Arundel Drive, S. Harrow, HA2 8PW
020 8864 5546
Headteacher: Ms Barbara Graham
Places Available: 60
www.earlsmeadprimaryschool.co.uk
DfE No. 310 2005

A 4-11 N   

8

Elmgrove Primary School and Nursery

Kenmore Avenue, Kenton, HA3 8LU
020 8909 2992
Headteacher: Miss Sarah Neary
Places Available: 120
www.elmgrove.harrow.sch.uk
DfE No. 310 2082

C 4-11 N   

9

Glebe Primary School

Glebe Avenue, Kenton, HA3 9LF
020 8204 6564
Headteacher: Fariyah Anwar-Simmons
Places Available: 90
www.glebe.harrow.sch.uk
DfE No. 310 2098

C 4-11 N   

10

Grange Primary School

Welbeck Road, Harrow, HA2 0RY
020 8422 5070
Headteacher: Mr Daniel Kerbel
Places Available: 60
www.grange.harrow.sch.uk
DfE No. 310 2071

C 4-11 N   

11

Grimsdyke School

Sylvia Avenue, Hatch End, HA5 4QE
020 8428 1324
Headteacher: Mr Iain Sutherland
Places Available: 90
www.grimsdyke.harrow.sch.uk
DfE No. 310 2052

C 4-11   

12

Heathland School

Eastcote Lane, S. Harrow, HA2 9AG
020 8422 4503
Headteacher: Ms Fiona Hopkins
Places Available: 90
www.heathlandschool.net
DfE No. 310 2072

A 4-11 N   

13

Hujjat Primary School

Brookshill, Harrow Weald, HA3 6RR
020 8189 9730
Headteacher: David Poole
Places Available: 60
website: www.hujjatprimary.org
contact: admissions@hujjatprimary.org
DfE No. 310 2004

F 4-11   

14

Kenmore Park Infant and Nursery School

Moorhouse Road, Kenton, HA3 9JA
020 8204 8759
Headteacher: Mrs Rutinderjit Mahil-Pooni
Places Available: 90
www.kpins-harrow.org.uk
DfE No. 310 2083

C 4-7 N   

Home

Map

Admissions

Apply
Now

15

Kenmore Park Junior School

Moorhouse Road, Kenton, HA3 9JA
020 8204 6294

Headteacher: Mr Michael Baumring

Places Available: 90

<http://www.kpjs.harrow.sch.uk>

DfE No. 310 2059

C 7-11   

16

Krishna Avanti Primary School

Camrose Avenue, Edgware,
HA8 6ES

020 8381 3344

Headteacher: Ms Shruti Bellare

Places Available: 60

www.avanti.org.uk/kapsharrow

DfE No. 310 3513

A 4-11  N   

17

Longfield Primary School

Dukes Avenue, N. Harrow,
HA2 7NZ

020 8866 7331

Headteacher: Mrs Pam Virdee

Places Available: 90

www.longfieldprimaryschool.co.uk

DfE No. 310 2066

C 4-11 N   

18

Marlborough Primary School




Marlborough Hill, Harrow, HA1 1UJ
020 8427 3087

Acting Headteacher:

Mrs Claire Robinson-Jones

Places Available: 90

www.marlborough.harrow.sch.uk

DfE No. 310 2051 N   

C 4-11

19

Newton Farm Nursery, Infant and Junior School

Ravenswood Crescent, S. Harrow, HA2 9JU
0208 864 8081

Headteacher: Mr Matthew Bradley

Places Available: 60

www.newtonfarm.harrow.sch.uk

DfE No. 310 2045

C 4-11 N   

20

Norbury School

Welldon Crescent, Harrow, HA1 1QQ
020 8863 8769

Headteacher: Ms Louise Browning

Places Available: 90

www.norbury.harrow.sch.uk

DfE No. 310 2096

C 4-11 N   

21

Pinner Park Primary School

Melbourne Avenue, Pinner, HA5 5TL
020 8863 2191

Headteacher: Mr Nick Waldron

Places Available: 120

www.pinnerpark.harrow.sch.uk

DfE No. 310 2076

C 4-11 N   

22

Pinner Wood School

Latimer Gardens, Pinner,
HA5 3RA

020 8868 2468

Headteacher: Miss Sarah Marriott

Places Available: 90

www.pinnerwood.harrow.sch.uk

DfE No. 310 3512

C 4-11 N   

Home

Map

Admissions

Apply
Now

23

Priestmead Primary School and Nursery

Hartford Avenue, Kenton, HA3 8SZ
020 8907 5434
Executive Headteacher: Mr Sash Hamidi
Associate Headteacher: Mrs Amy Creamer
Places Available: 120
www.priestmead.harrow.sch.uk
DfE No. 310 2061

A 4-11 N  

24

Roxbourne Primary School

Torbay Road, Harrow,
HA2 9QF
020 8422 9207
Headteacher: Mr Rashid Benserghin
Places Available: 60
www.roxbourneprimaryschool.co.uk
DfE No. 310 2084

C 4-11 N  

25

Roxeth Primary School

Brickfields, Byron Hill Road,
Harrow, HA2 0JA
020 8422 1344
Headteacher: Mr Steven Deanus
Places Available: 60
www.roxethschoolharrow.org
DfE No. 310 2050

C 4-11  

26

St Anselm's Catholic Primary School

Roxborough Park, Harrow-on-the-Hill HA1 3BE
020 8422 1600
Headteacher: Mrs Maria O'Connell
Places Available: 60
www.st-anselms.harrow.sch.uk
DfE No. 310 3501

VA 4-11   

27

St Bernadette's Catholic Nursery & Primary School

Clifton Road, Kenton, HA3 9NS
020 8204 8902
Headteacher: Mr David O'Farrell
Places Available: 60
www.st-bernadettes.co.uk
DfE No. 310 3500

A 4-11  N  

28

St George's Catholic Primary School

Sudbury Hill, Harrow, HA1 3SB
020 8422 1272
Headteacher: Ms Deirdre Monaghan
Places Available: 60
www.stgeorgesprimary.org
DfE No. 310 3508

A 4-11   

29

St Jérôme Church of England Bilingual School

120-138 Station Road, Harrow, HA1 2DJ
020 3019 6363
Headteacher: Daniel Norris
Places Available: 60
www.stjeromebilingual.org
DfE No. 310 2002

F 4-11  

30

St John Fisher Catholic Primary School

Melrose Road, Pinner, HA5 5RA
020 8868 2961
Headteacher: Mrs Nina Pignatiello
Places Available: 90
www.stjohnfisherschool.co.uk
DfE No. 310 3505

A 4-11   

Home

Map

Admissions

Apply
Now

31

St John's C of E School

127 Stanmore Hill, Stanmore, Middlesex,
HA7 3FD

020 8954 3978

Headteacher: Mrs Jo Hester

Places Available: 60

www.stjohns.harrow.sch.uk

DfE No. 310 3511

VA 4-11    

32

St Joseph's Catholic Primary School

Dobbin Close, Harrow, HA3 7LP

020 8863 8531

Headteacher: Mr Christopher Briggs

Places Available: 60

www.stjosephs.harrow.sch.uk

DfE No. 310 3507

A 4-11    

33

St Teresa's Catholic Primary & Nursery School

Long Elmes, Harrow Weald, HA3 6LE

020 8428 8640

Headteacher: Mrs Laura Thornton

Places Available: 60

www.st-teresas.harrow.sch.uk

DfE No. 310 3504

VA 4-11  N   

34

Stag Lane Primary School and Nursery

Collier Drive, Edgware, HA8 5RU

020 8952 1475

Headteacher: Nina Will

Places Available: 120

www.staglaneprimary.co.uk

DfE No. 310 2079

C 4-11 N   

35

Stanburn Primary School

Abercorn Road, Stanmore, HA7 2PJ

020 8954 1423

Headteacher: Ms Elaine D'Souza

Places Available: 90

www.stanburn.harrow.sch.uk

DfE No. 310 2085

C 4-11   

36

Vaughan Primary School

The Gardens, W. Harrow, HA1 4EL

020 8427 7222

Headteacher: Mrs Karen Jones

Places Available: 90

www.vaughan.harrow.sch.uk

DfE No. 310 2097

C 4-11 N   

37

Weald Rise Primary School

Robin Hood Drive, Harrow Weald,
HA3 7DH

020 8954 4531

Headteacher: Mrs Folake Agbaniyaka

Places Available: 60

www.wealdrise.harrow.sch.uk

DfE No. 310 2086

C 4-11 N   

38

The Welldon Park Academy

Wyvenhoe Road, South Harrow, HA2 8LS

020 8864 9378

Executive Headteacher: Mr Sash Hamidi

Associate Headteacher: Mrs Rachel Bates

Places Available: 60

www.welldonpark.theppt.co.uk

DfE No. 310 2007

C 4-11 N   

Home

Map

Admissions

Apply
Now

39

West Lodge Primary School

West End Lane, Pinner, HA5 1AF
020 8866 9836
Headteacher: Mr Jim Dees
Places Available: 90
www.westlodge.harrow.sch.uk
DfE No. 310 2087

C 4-11   

40

Whitchurch Primary School

Wemborough Rd, Stanmore, HA7 2EQ
020 8951 5380
Headteacher: Ms Caroline Rowley
Places Available: 120
www.whitchurchprimary.harrow.sch.uk
DfE No. 310 2101

C 4-11 N   

41

Whitefriars School

Whitefriars Avenue, Wealdstone,
HA3 5RQ
020 8427 2080
Headteacher: Mr Jonathan Watson
Places Available: 90
www.whitefriarsschool.net
DfE No. 310 2049

A 4-18 N   

Primary schools admissions arrangements

Home

Map

Schools

Apply
Now

The pages that follow contain admissions arrangements for Harrow's primary schools, including Academy schools, Free Schools and Voluntary Aided Schools.

For each school, a list of criteria will be outlined which explain which children have priority for admission, should the school be oversubscribed. Tie-breakers are also explained, in the case of a tie

for priority. We strongly recommend you read these arrangements in full before applying to the schools of your choice. Many arrangements differ substantially from each other.

The admissions arrangements that follow are binding, and no exceptions will be made during the admissions process.



Community schools

Oversubscription criteria

The oversubscription criteria are applied when more applications have been received than there are places available at a school. Applications are considered in the following order:

a) **A 'looked after child' or a child who was previously looked after** but immediately after being looked after became subject to an adoption, child arrangements, or special guardianship order, including those who appear to [to the admission authority] to have been in state care outside of England and ceased to be in state care as a result of being adopted.

A looked after child is a child who is (a) in the care of a local authority, or (b) being provided with accommodation by a local authority in the exercise of their social services functions (see the definition in Section 22(1) of the Children Act 1989). This includes children who were adopted under the Adoption Act 1976 (see section 12 adoption orders) and children who were adopted under the Adoption and Children's Act 2002 (see section 46 adoption orders). Child arrangements orders are defined in s.8 of the Children Act 1989, as amended by s.12 of the Children and Families Act 2014. Child arrangements orders replace residence orders and any residence order in force prior to 22 April 2014 is deemed to be a child arrangements order. Section 14A of the Children Act 1989 defines a 'special guardianship order' as an order appointing one or more individuals to be a child's special guardian (or special guardians).

b) **Children attending the linked infant school.** This criterion only applies to infant to junior school applications. All children currently attending Year 2 in a separate infant school have a linked priority to the junior school, even if this number is greater than the junior school's Published Admissions Number.

c) **Children for whom it is essential to be admitted to a specific school because of special circumstances to do with significant medical needs and or social needs.**

This criterion relates to the child's medical and or social needs. Except in wholly exceptional circumstances such requests will only be

considered for the school closest to the home address where this criterion is used in Harrow by the admission authority. The application must be supported by written evidence. The supporting evidence should set out the particular reasons why the school in question is the most suitable and the difficulties that would be caused if the child had to attend another school. The recommendation for this specific school should demonstrate knowledge of the school in terms of resources and organisation which deems it essential that the named pupil be admitted to the specific school. The admission authority cannot give higher priority to children under this criterion if the required documents have not been produced.

Medical Needs

Applications made on medical grounds must be accompanied by compelling medical evidence from a hospital consultant at the time of application. The letter from the hospital consultant must provide information about the child's medical condition, the effects of this condition and why, in view of this, the child needs to attend the parent's preferred school.



If the school is not the closest to home, the consultant must set out in detail the wholly exceptional circumstances for attending this school and the difficulties if the child had to attend another school.

Medical claims will only be considered for one school and this should be named by the consultant.

In assessing these applications, advice will be sought from Harrow's Special Education Needs Service.

Home

Map

Schools

Apply
Now

Home

Map

Schools

Apply
Now

Social Needs

Applications made on social grounds must be accompanied by compelling evidence at the time of application. Social needs claims will be considered where there is involvement from a social worker. The application will need to be supported with a letter from a Divisional Director of Children & Young People Services or a person holding a similar role in another local authority. The director must set out in detail the wholly exceptional circumstances for attending this school and the difficulties if the child had to attend another school.

Social claims will only be considered for one school and this should be named in the letter from a Divisional Director of Children & Young People Services or a person holding a similar role in another local authority.



d) Medical reasons relevant to parent(s)

Parent(s) with special medical reasons for seeking a place for their child at their preferred school. Except in wholly exceptional circumstances such requests will only be considered for the school closest to the home address where this criterion is used in Harrow by the admission authority. Applications will only be considered for the parent(s) with whom the child lives and must be accompanied by compelling medical evidence from a hospital Consultant at the time of application. The letter from the hospital consultant must

provide information about the parent's medical condition, the effects of this condition and why, in view of this, the child needs to attend the parent's preferred school.

If the school is not the closest to home, the consultant must set out in detail the wholly exceptional circumstances for attending this school and the difficulties if the child had to attend another school.

Medical claims will only be considered for one school and this should be named by the consultant.

In assessing these applications, guidance will be sought as appropriate (e.g. Harrow Association of Disabled people).

e) Sibling link (i.e. older brothers/sisters)

Children with a brother or sister attending the primary, infant school or linked junior school at the time of admission.

f) Children of staff of the school

Children where their parent(s) has been employed by the school for two or more years at the time at which the application for admission to the school is made or where the member of staff has been recruited to a vacant post where there is a demonstrable skills shortage.

g) Distance

Children living nearest to the school measured in a straight line from home to school. This must be the address where the parent and child normally live and they must be living there on the closing date for receipt of applications.

Tie Breaker

If more applications are received in any one criterion than there are places available the oversubscription criteria will be re-applied followed by the 'tie-breaker' of distance, measured in a straight line. In cases where applicants live equidistant from the preferred school and places cannot be offered to both children, the available place will be allocated using a random computer selection.

Admissions arrangements for the following schools can be found on the schools' websites:

[Avanti House Primary School](#)

[Aylward Primary](#)

[Earlsmead Primary School](#)

[Heathland Whitefriars Federation](#)

[Hujjat Primary School](#)

[Krishna Avanti School](#)

[Priestmead Primary School and Nursery](#)

[St Anselm's Catholic Primary School](#)

[St Bernadette's Catholic Nursery and Primary School](#)

[St George's Catholic Primary School](#)

[St Jérôme Church of England Bilingual School](#)

[St John Fisher Catholic Primary School](#)

[St John's Church of England School](#)

[St Joseph's Catholic Primary School](#)

[St Teresa's Catholic Primary & Nursery School](#)

[The Welldon Park Academy](#)

Home

Map

Schools

Apply
Now

Applying for schools in other boroughs

Home

Map

Admissions

Apply Now

Parents of children who live in Harrow may apply to schools in neighbouring boroughs. Similarly, parents of children who live outside Harrow may apply to schools inside Harrow. It may be true that the nearest school or schools to your home are located in other boroughs.

You can apply to schools in other boroughs by simply naming them on your application form in the usual way. You should only fill out one application form, and that should

be the form from the borough where you live. So if your child is a Harrow resident, fill out a Harrow form – even if you are not applying to any Harrow schools. You can only apply to a maximum of four schools in Hertfordshire.

Please find contact details below for admissions departments in neighbouring Councils where you can get advice on school open days, admissions arrangements and other details.

Barnet

Pupil Admissions and Travel
Building 4
North London Business Park
Oakleigh Road South
London N11 1NP
☎ 020 8359 7651
✉ school.admissions@barnet.gov.uk
🌐 www.barnet.gov.uk



Brent

Pupil and Parent Services
PO Box 1057
Wembley
Middlesex HA9 1HJ
☎ 020 8937 3110
✉ school.admissions@brent.gov.uk
🌐 www.brent.gov.uk
🌐 www.brent.gov.uk/admissions



Ealing

School Admissions
Perceval House
14 – 16 Uxbridge Road, London W5 2HL
☎ 0208 825 5511 (Primary school admissions)
☎ 0208 825 5522 (High school admissions)
✉ mainroundadmissions@ealing.gov.uk



Hertfordshire

Children, Schools & Families
CHR 102
Pegs Lane
Hertford
SG13 8DQ
☎ 0300 123 4043
✉ hertsdirect@hertfordshire.gov.uk
🌐 www.hertsdirect.org



Hillingdon

London Borough of Hillingdon
School Placement and Admissions Team
4E/09 Civic Centre
High Street, Uxbridge
UB8 1UW
☎ 01895 556644
✉ admissions@hillington.gov.uk
🌐 www.hillingdon.gov.uk/schools



www.education.gov.uk
For other Local Authority
address details

Children with Special Educational Needs

Home

Map

Admissions

Apply Now

Harrow aims to enable children with Special Educational Needs (SEN) to attend their local primary school wherever possible, and the vast majority of children with SEN do so. Only a small number of children, who have the most complex needs, receive places at a special school or at a mainstream school with special provision. To talk about the most appropriate placement for their child, parents should contact the Special Educational Needs Assessment and Review Service (SENARS) on 020 8051 8383.

There are two separate admissions arrangements for children with SEN, depending on whether they have an Educational, Health and Care Plan.

Children WITHOUT an EHC Plan

These children go through the normal admission procedure. Parents should fill out an application form in the usual way and children will be offered a place based on the school's published admissions criteria. All schools in Harrow receive additional funding to provide extra help for children with SEN.

Children WITH an EHC Plan

These children do not go through the normal admission procedure. SENARS will establish parents' school preference

and consult the school for a place on their behalf, as appropriate.

If necessary, SENARS will contact parents again to discuss other options. We encourage parents to complete school application forms, but this is optional.

SENARS will write to parents in the third week of January to offer their child a place at a primary or junior school and to propose support arrangements. An amended Final EHC Plan, which names a school, will then be issued by 15 February on the year of transfer.

Right to appeal

Parents who are dissatisfied with the school that is being offered should contact SENARS. If concerns cannot be resolved, parents have the right of appeal to the First-Tier Tribunal of the Health, Education and Social Care Chamber (HESC).

The Special Educational Needs and Disability Code of Practice January 2015 states that a school may only object to the admission of a child with an EHC Plan on the following grounds:

That the placement of the child would be incompatible with the efficient education of the pupils with whom they would be educated and that there are no reasonable steps that can be taken to enable the inclusion of the child.

If you believe this process applies to you or your child please contact SENARS on 020 8051 8383.

Appeals

You can appeal any decision made about the school place you have been offered. Bear in mind that appeals will be heard on the basis of the admissions criteria

listed in this guide. Please be sure you have strong grounds before you make an appeal. Last year no primary school admissions appeals were successful.

Home

Map

Admissions

Apply
Now

Name of school	Number of appeals in 2022
Avanti House Primary School	1
Belmont School	2
Canon Lane Primary School	2
Grimsdyke School	2
Marlborough Primary School	3
Newton Farm Nursery, Infant and Junior School	2
Norbury School	2
Pinner Park Primary School	2
Pinner Wood School	3
Priestmead Primary School	5
Vaughan Primary School	5
West Lodge Primary School	2

How to appeal

Appeal forms are available on our website at www.harrow.gov.uk/schooladmissions. If you wish to appeal about a place at a community school, and for guidance and information, please email school.admissions@harrow.gov.uk.

If you wish to appeal to a voluntary aided school or free school, please contact the school directly.

An appeal has to be made in writing, setting out the grounds on which it is made, in full. You must include a full description of your

case. Additional information and evidence supporting your appeal and its grounds should be submitted as soon as possible and before the appeal hearing. Please note that any evidence or information submitted on the date of the appeal may not be considered.

Appeals will be heard early in the summer term 2023. To be considered in this first round of grouped appeals, your appeal form must be received by Tuesday 16 May 2023. Subsequently, appeals hearings are held periodically through the academic year.

Home

Map

Admissions

Apply
Now

How the appeals process works

As the table above shows, it is rare that an appeal is able to change the outcome of the admissions process.

For any appeal to succeed, it must be proven that the Admissions Authority both failed to apply its own rules as set out in this booklet and in the mandatory requirements of the School Admissions Code and Part 3 of the School Standards and Framework Act 1998 and did not behave in a reasonable and impartial manner when making decisions.

Appeals for community schools are organised by Harrow Democratic Services, independently of the Admissions Authority. Democratic Services will notify you of the

date of your appeal hearing and you will be requested to attend.


At the appeal, the Admissions Authority will explain the reasons why your child could not be offered a place. You will have the chance to ask questions and members of the appeal panel will ask you questions. The appeal panel will then make its decision and you will be notified of the result in writing. Any child admitted to a school as a result of an appeal will take precedence over others on the waiting list.

Appealing to a school outside Harrow

Please contact the Local Authority where the school is located for information of how to appeal.



Primary Schools Map

1  Hover over the location to see school details

1  Click to see travel maps

